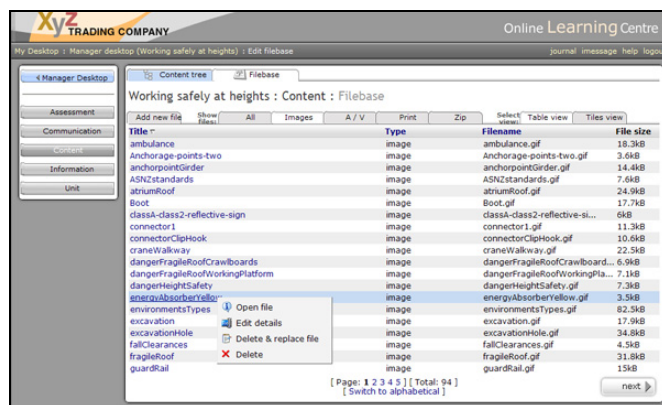
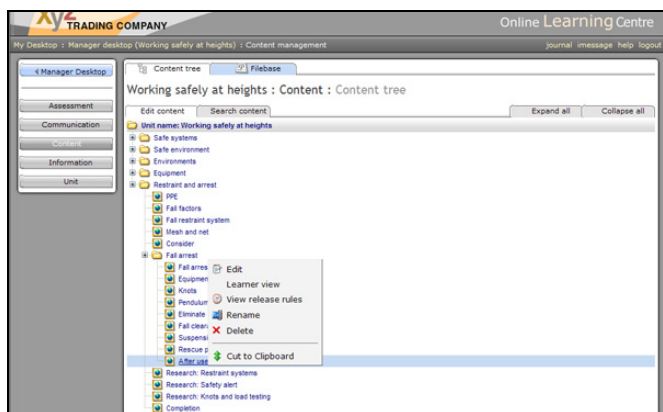


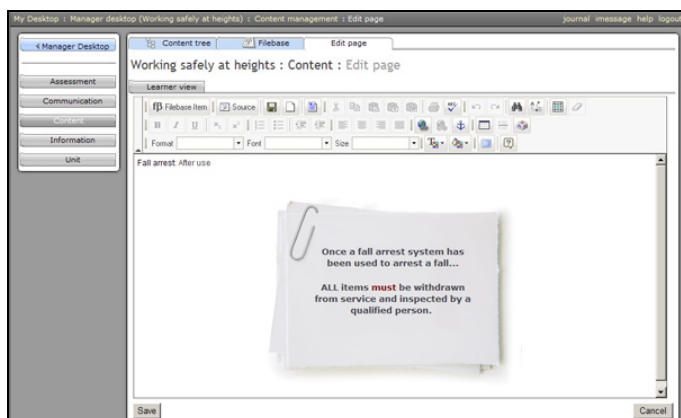
OLC: Online content

The content tree and filebase

Creating online content is a relatively simple process using the content editor and filebase. Firstly a folder is created and then pages are put in the folder. This creates a structure known as the content tree. Each page is visible to the learner and changes made to the contents are immediately published to the web.



The left screenshot is a content tree for a unit titled 'Working safely at heights'. The page 'After use' is highlighted and the drop down menu shows what can be done with a page. The right screenshot shows the filebase which contains the images and documents that will be added/linked to pages in this unit.



The left screenshot shows the editor's view of the 'After use' page. The content editor is a WYSIWYG – 'What you see is what you get'. It is designed to be used by people who are not familiar with html. The right screenshot is the learner view of the 'After use' page. They see the content tree as a menu in the sidebar.